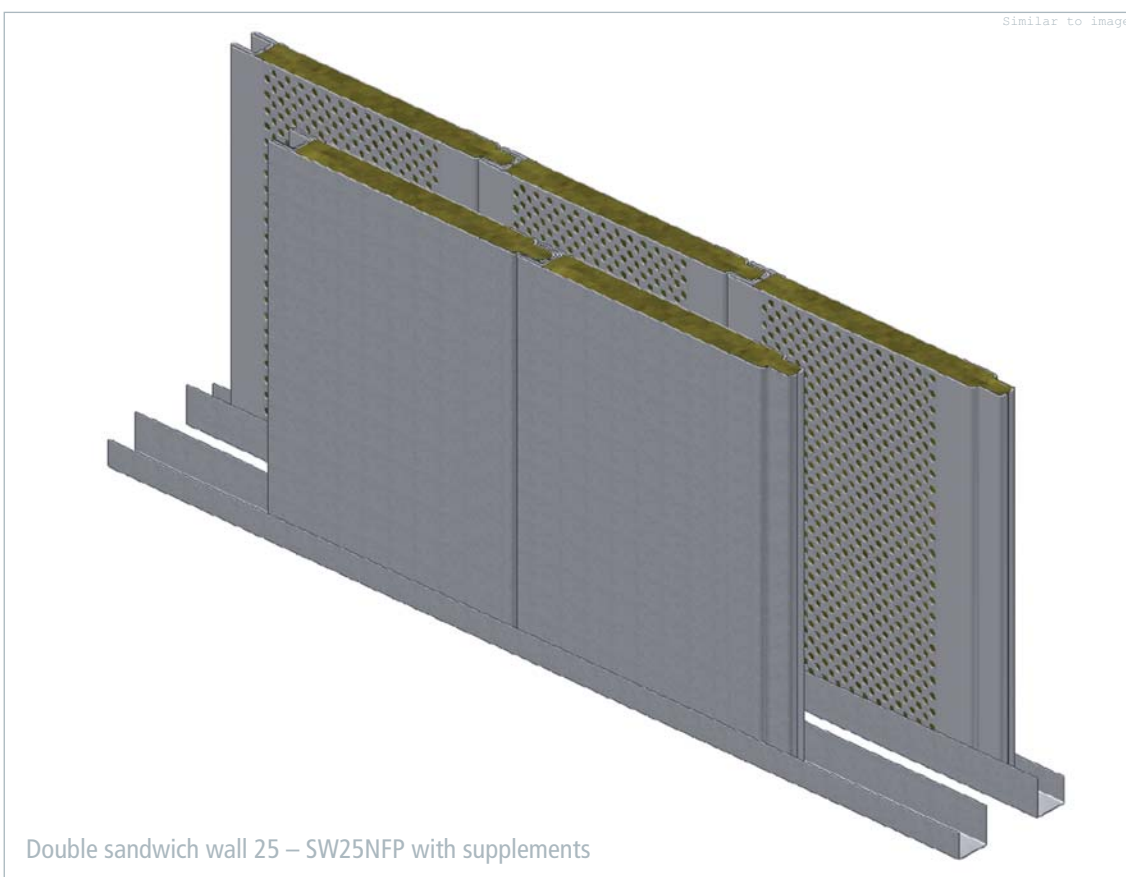
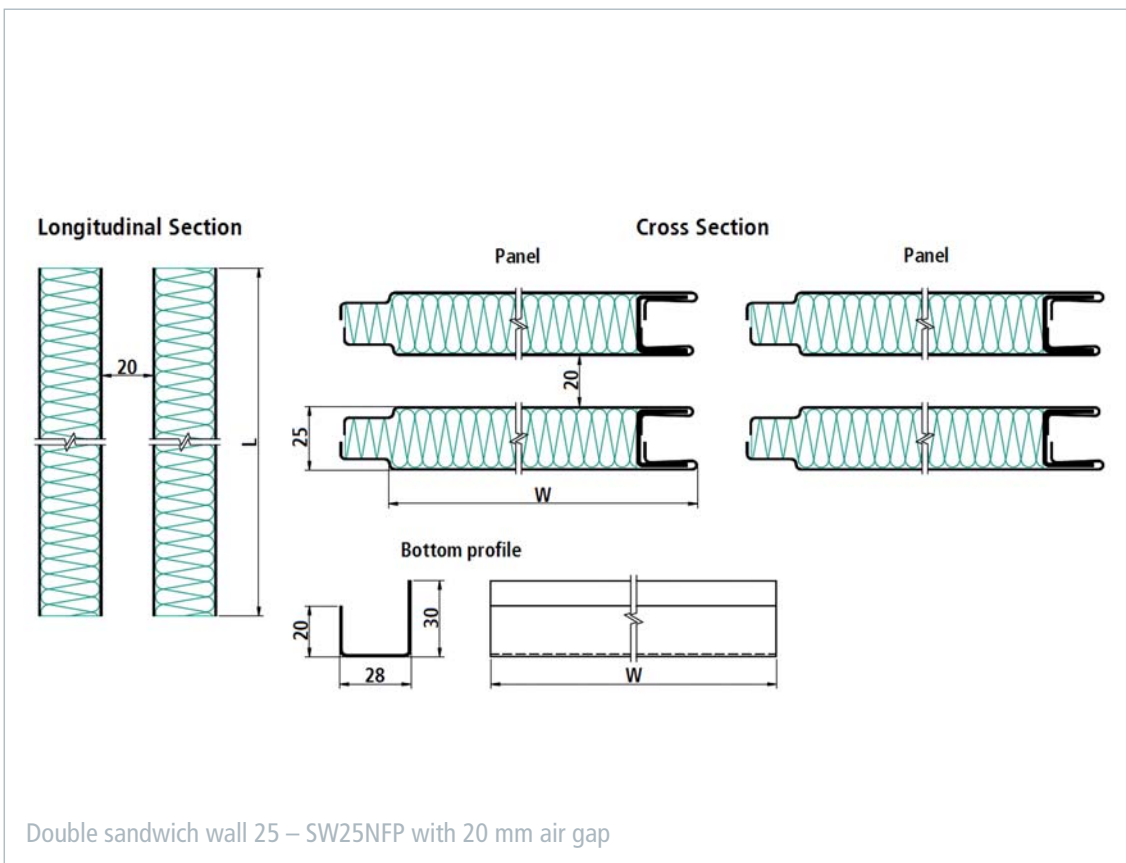


Double sandwich wall 25 – SW25NFP



■ The SW25NFP double sandwich wall has been developed to meet very stringent noise-insulation requirements when two adjacent compartments need to be separated. By perforating the backsides of each panel, the double wall reaches a sound reduction of 45 dB and a B-30 fire classification status. Like the SW25NF wall panel, the SW25NFP system is based on the tongue and groove connection principle. The connection to the floor is achieved by assembling prefabricated U-profiles that are fastened to the bottom construction.

A large variety of surface finishes are available; all of them have a removable protective foil to prevent any damage from occurring during installation. The design of the SW25NFP double wall panel system and all components used have been tested and approved according to international standards.



| Double sandwich wall 25 – SW25NFP | |
|---|--|
| Technical data | Steel Steel or Stainless steel Stainless steel |
| Fire classification | B-30 |
| Sound reduction according to DIN EN ISO 140-3 | 45 dB |
| Element width | 250 – 600 mm |
| Element length | 1000 – 2475 mm |
| Thickness per panel | 25 mm |
| Gap between panels | 20 mm |
| Mass per area – panel | 26.1 kg/m ² |
| Mass per length – U-profile | 1.2 kg/m |
| Density of insulation material | 150 kg/m ³ |
| Coating | PVC foil varnish coated (others on request) |
| Certification | EC, USCG |