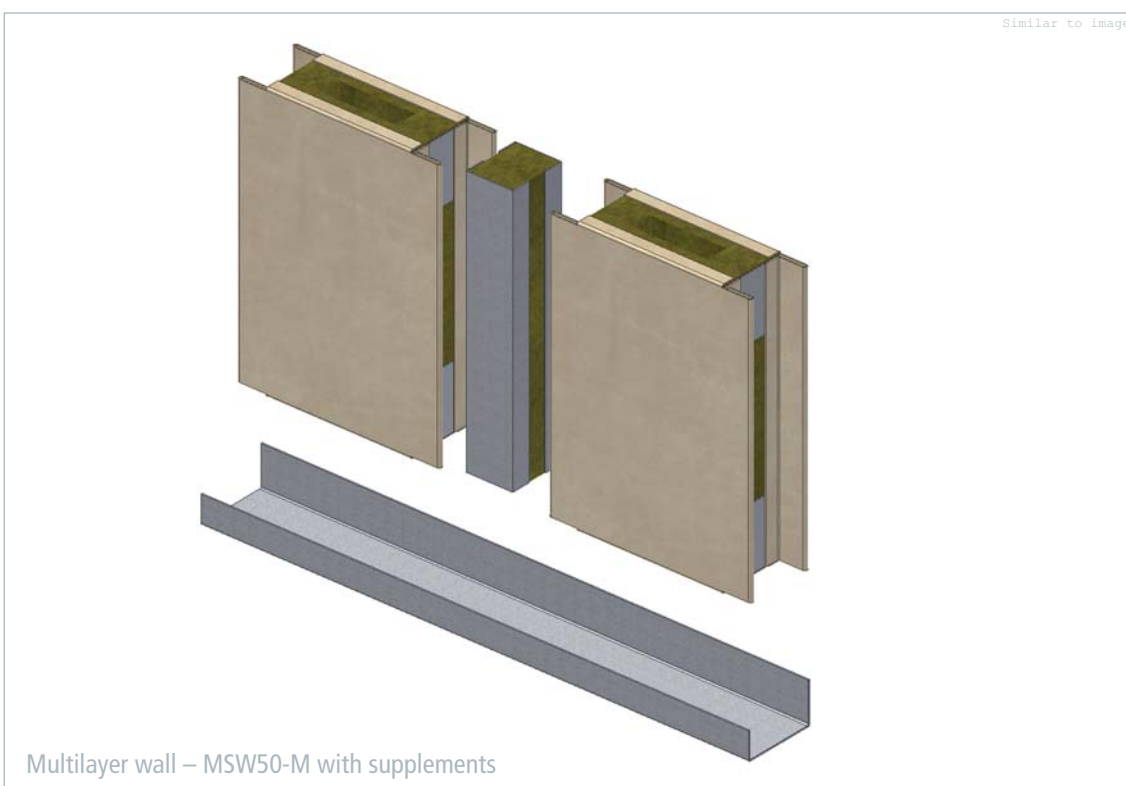
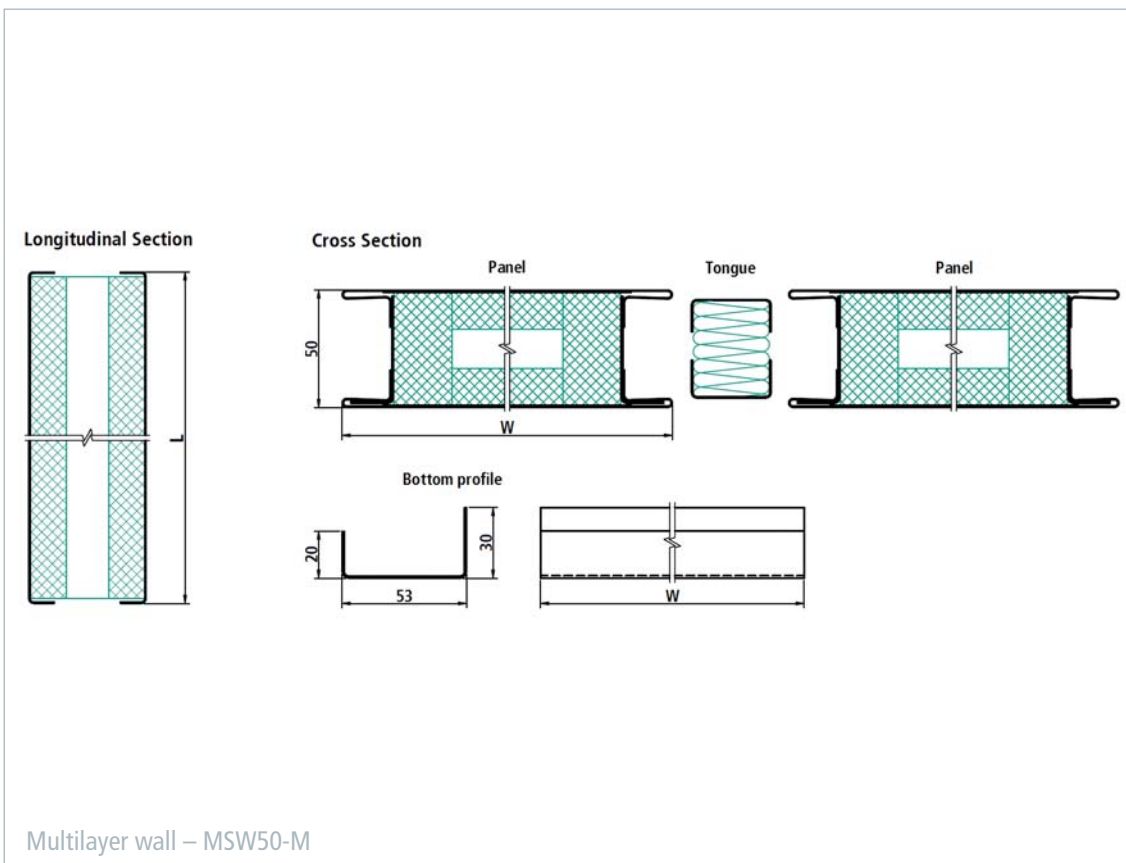


## Multilayer wall – MSW50-M



■ The MSW50-M multilayer wall is designed to meet very stringent noise-insulation requirements. With its sound reduction index of  $R_w = 42$  dB, this wall meets the highest requirements for noise control; in addition, it fulfills the requirements of fire classification B-15. The assembly is based on the tongue and groove principle. The wall is connected to the floor using prefabricated U-shaped sections, available in a number of different lengths from the manufacturer. The sections are laid out and fastened onto the floor.

A large variety of surface finishes are available; all of them have a removable protective foil to prevent any damage from occurring during installation. The design of the MSW50-M multilayer wall and all components used have been tested and approved according to international standards.



Multilayer wall – MSW50-M	
Technical data	Steel   Steel or Stainless steel   Stainless steel
Fire classification	B-15
Sound reduction according to DIN EN ISO 140-3	42 dB
Element width	250 – 600 mm
Element length	1000 – 2475 mm
Thickness	50 mm
Mass per area – panel	30.9 kg/m <sup>2</sup>
Mass per length – U-profile	0.8 kg/m
Density of insulation material – panel	300 kg/m <sup>3</sup>
Density of insulation material – tongue	150 kg/m <sup>3</sup>
Coating	PVC foil varnish coated (others on request)
Certification	EC,USCG