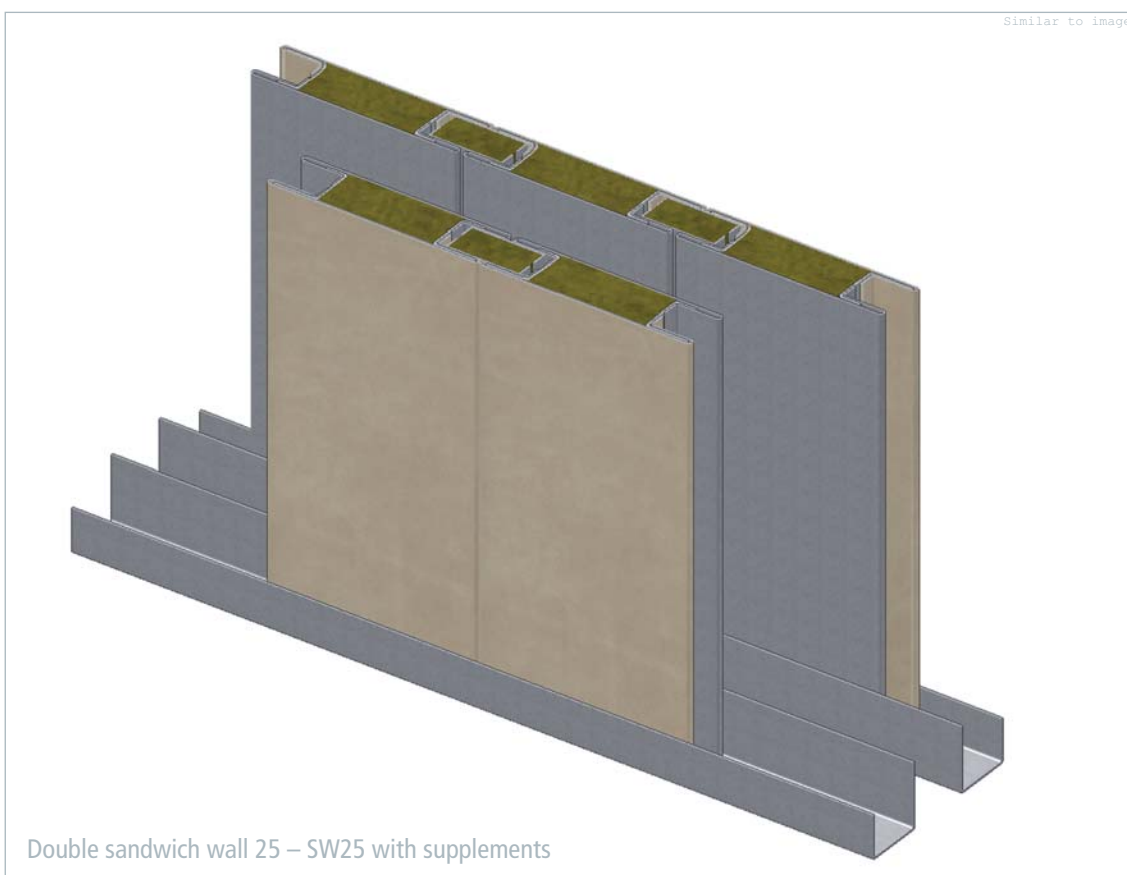
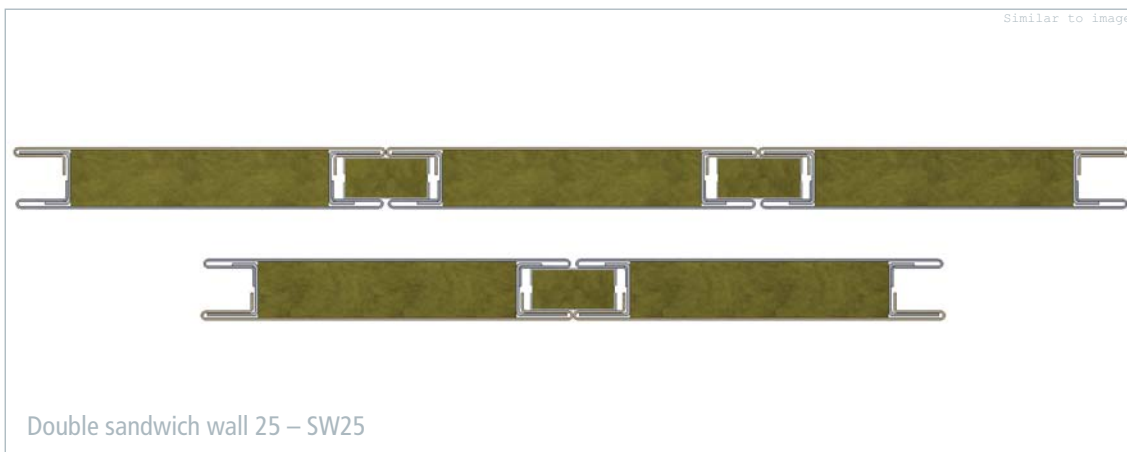
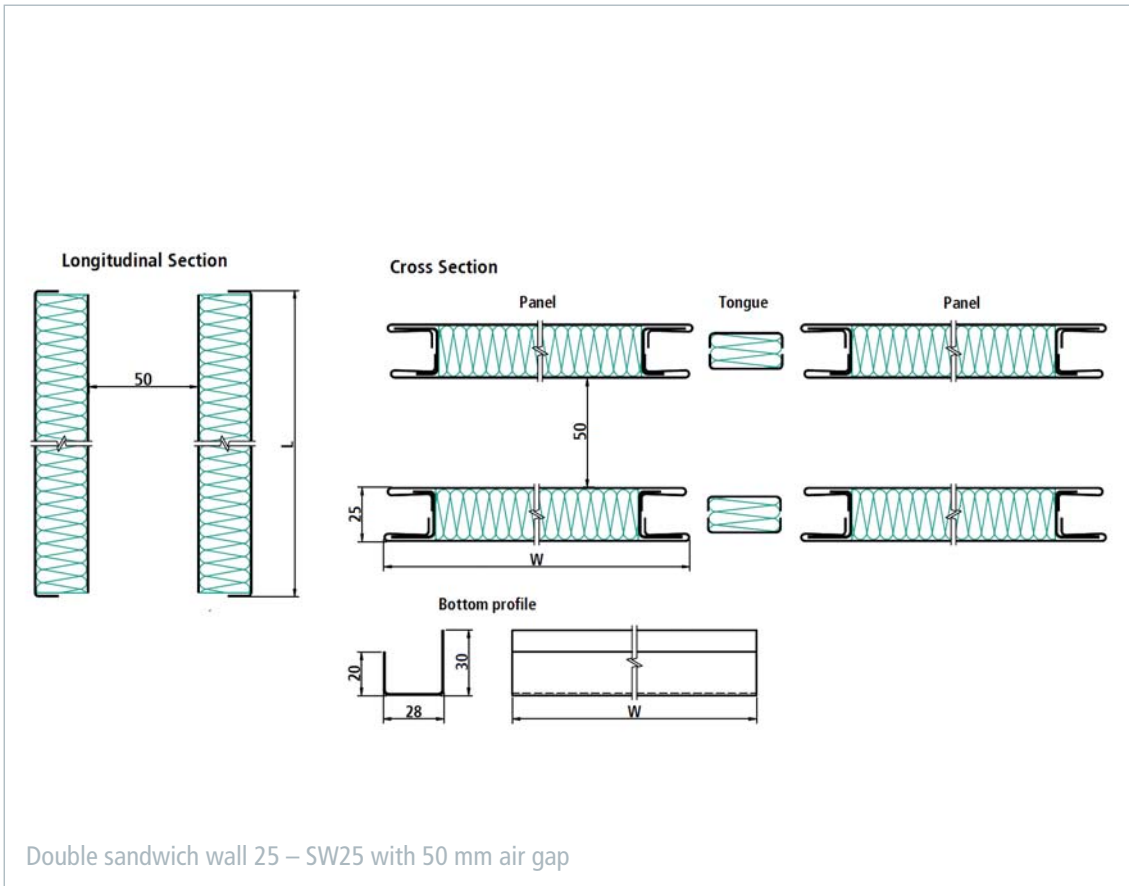


Double sandwich wall 25 – SW25



■ Besides the SW25 single walls, the R&M product range offers SW25 double walls as well. According to customer requirements, the double walls can be produced with steel or lightweight aluminum layers. Both variants are B-15 and B-30 fire rated, respectively. With a mass of only 20.6 kg/m², the aluminum version is especially used when the weight on board plays an important role. If the 50 mm air gap between the walls is filled with low density insulation, the sound reduction can be increased up to 42 dB. Like for the SW25 single walls, the connection of the panels is based on the tongue and groove principle. The connection to the floor is achieved by assembling prefabricated U-profiles that are fastened to the bottom construction.

A large variety of surface finishes are available; all of them have a removable protective foil to prevent any damage from occurring during installation. The design of the SW25 double wall panel system and all components used have been tested and approved according to international standards.



Double sandwich wall 25 – SW25		
Technical data	Steel Steel or Stainless steel Stainless steel	Aluminum Aluminum
Fire classification	B-15	B-30
Sound reduction according to DIN EN ISO 140-3	38 dB	32 dB (42 dB with filled air gap)
Element width	250 – 650 mm	250 – 650 mm
Element length	1000 – 2475 mm	1000 – 2475 mm
Thickness per panel	25 mm	25 mm
Gap between panels	50 mm	50 mm
Mass per area – panel	33.0 kg/m ²	20.6 kg/m ²
Mass per length – U-profile	1.2 kg/m	1.2 kg/m
Density of insulation material (panel and tongue)	150 kg/m ³	150 kg/m ³
Coating	PVC foil varnish coated (others on request)	PVC foil varnish coated (others on request)
Certification	EC, USCG, ABS, RMRS	EC, USCG