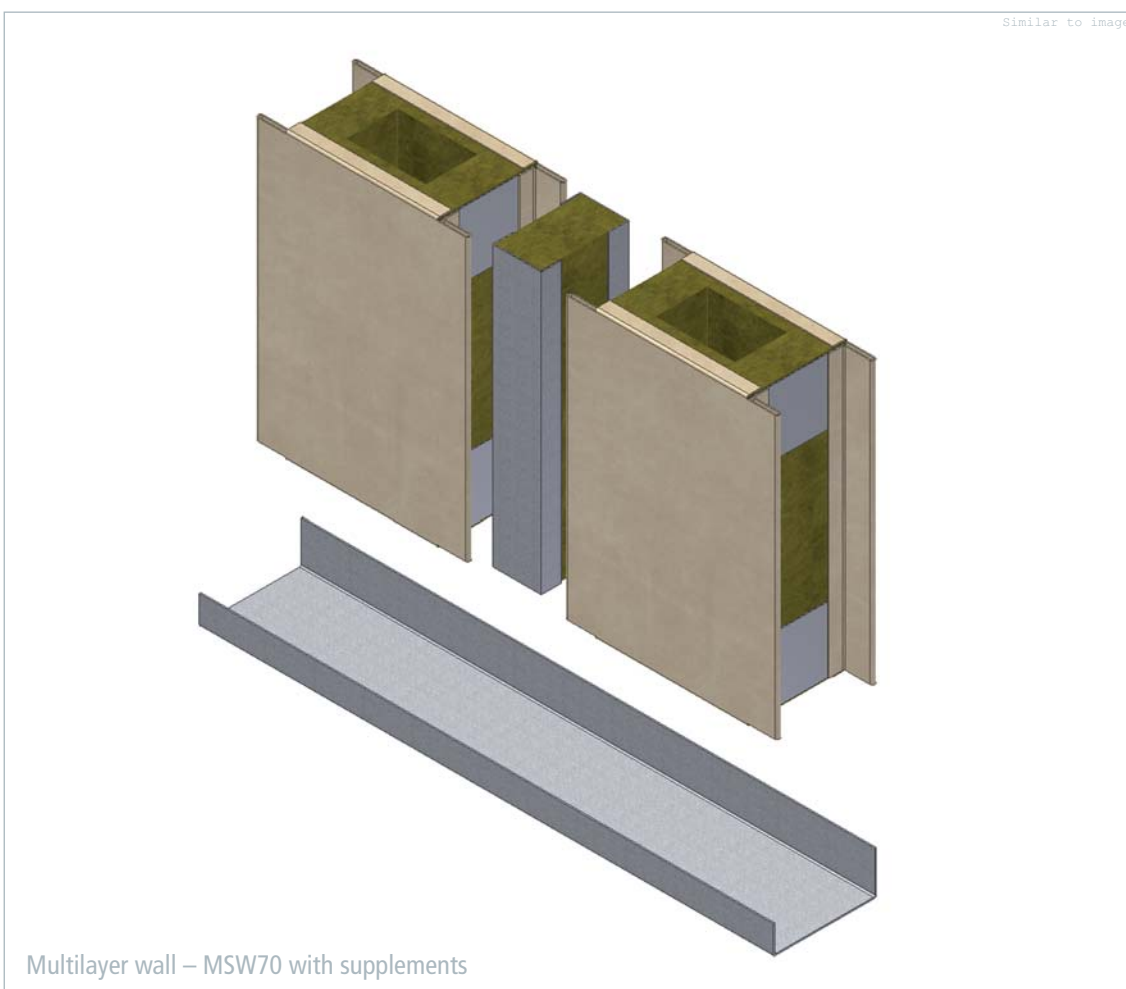
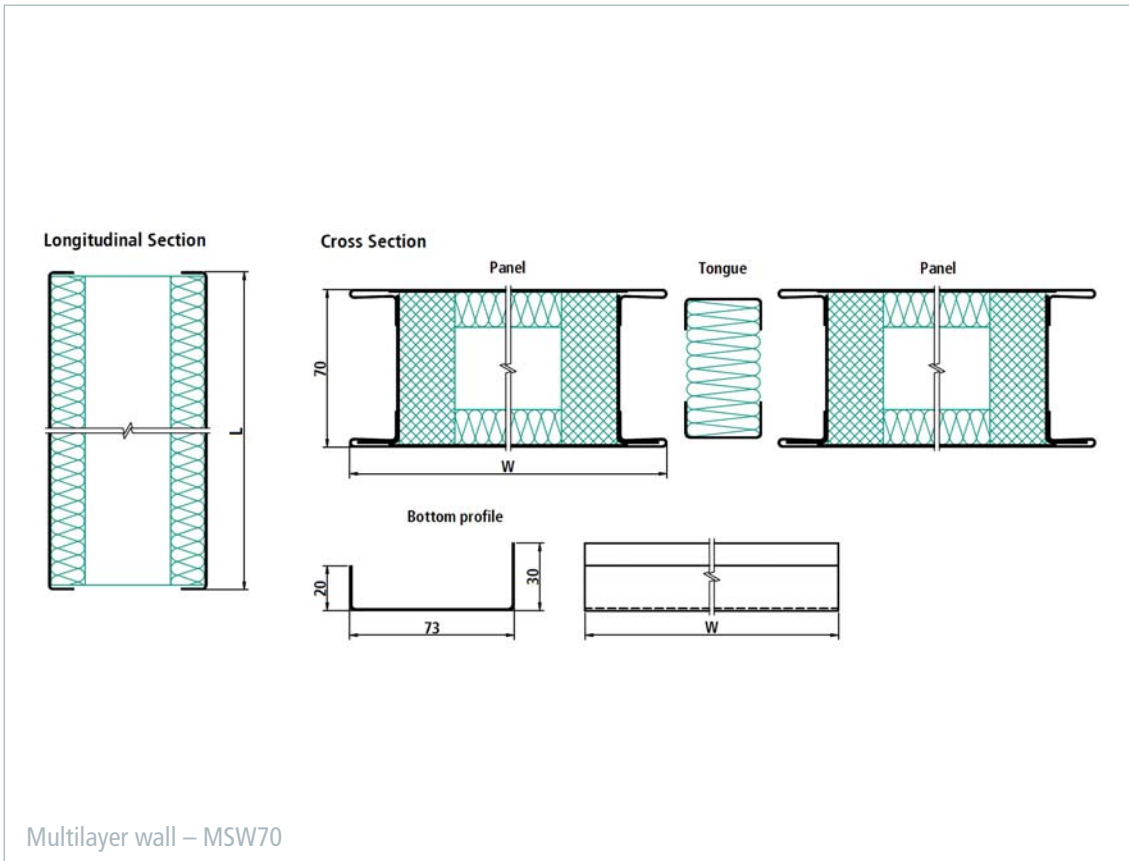


## Multilayer wall – MSW70



■ The MSW70 multilayer wall is a heavy-duty wall designed to meet very stringent noise-insulation requirements. In addition, this wall fulfills the requirements of fire classification B-30. The assembly is based on the tongue and groove principle. The wall is connected to the floor using prefabricated U-shaped sections, available in a number of different lengths from the manufacturer. The sections are laid out and fastened onto the floor. A large variety of surface finishes are available; all of them have a removable protective foil to prevent any damage from occurring during installation. The design of the MSW70 multilayer wall and all components used have been tested and approved according to international standards.



Multilayer wall – MSW70	
Technical data	Steel   Steel or Stainless steel   Stainless steel
Fire classification	B-30
Sound reduction according to DIN EN ISO 140-3	47 dB
Element width	250 – 600 mm
Element length	1000 – 2475 mm
Thickness	70 mm
Mass per area – panel	28.4 kg/m <sup>2</sup>
Mass per length – U-profile	0.8 kg/m
Density of insulation material – panel	150 kg/m <sup>3</sup> / 300 kg/m <sup>3</sup>
Density of insulation material – tongue	150 kg/m <sup>3</sup>
Coating	PVC foil varnish coated (others on request)
Certification	EC, USCG, ABS