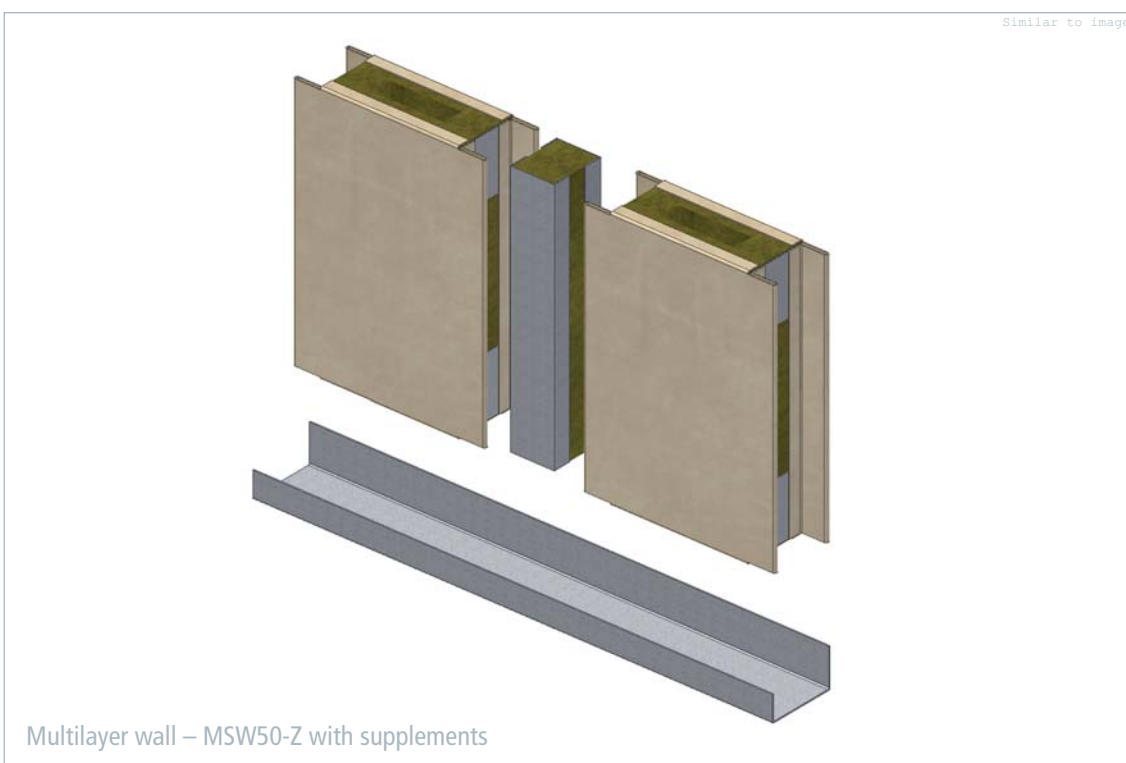
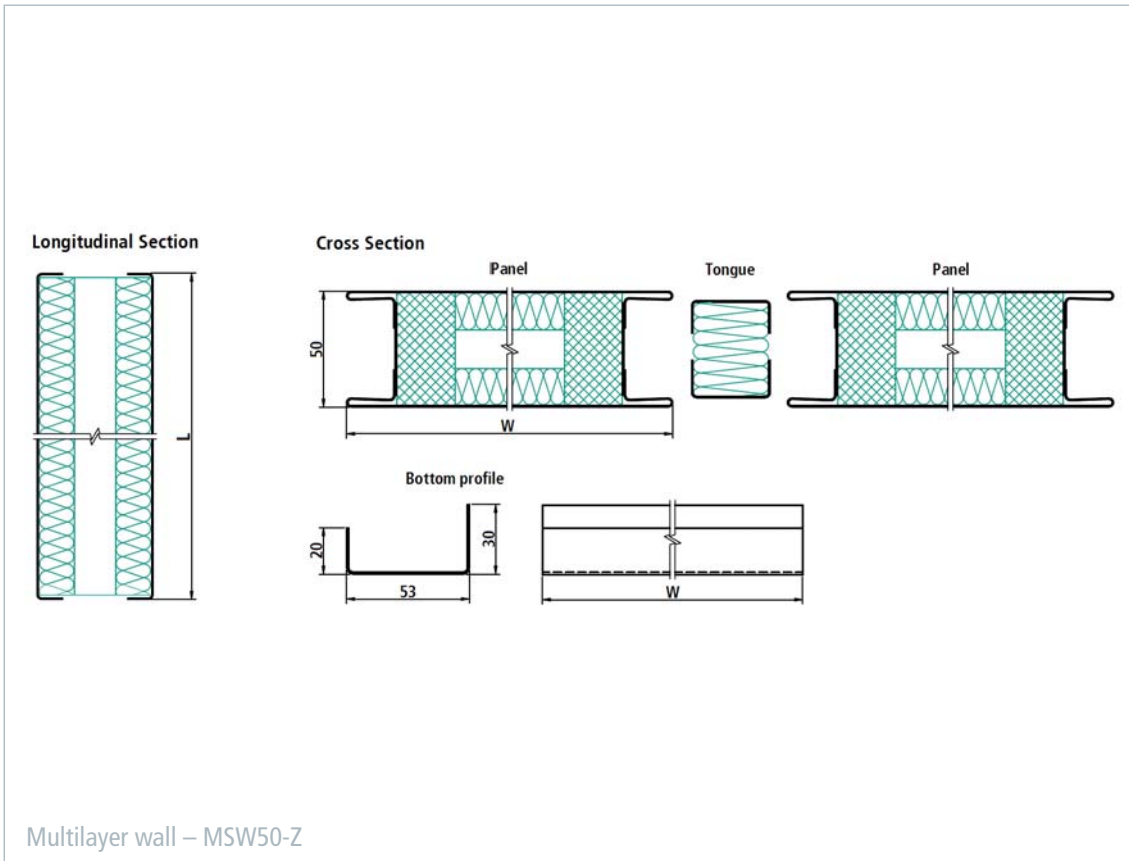


Multilayer wall – MSW50-Z



■ The MSW50-Z multilayer wall is designed to meet stringent noise-insulation requirements. In addition, this wall fulfills the requirements of fire classification B-15. The assembly is based on the tongue and groove principle. The wall is connected to the floor using prefabricated U-shaped sections, available in a number of different lengths from the manufacturer. The sections are laid out and fastened onto the floor.

A large variety of surface finishes are available; all of them have a removable protective foil to prevent any damage from occurring during installation. The design of the MSW50-Z multilayer wall and all components used have been tested and approved according to international standards.



Multilayer wall – MSW50-Z	
Technical data	Steel Steel or Stainless steel Stainless steel
Fire classification	B-15
Sound reduction according to DIN EN ISO 140-3	40 dB
Element width	250 – 600 mm
Element length	1000 – 2475 mm
Thickness	50 mm
Mass per area – panel	20.7 kg/m ²
Mass per length – U-profile	0.8 kg/m
Density of insulation material – panel	200 kg/m ³ / 300 kg/m ³
Density of insulation material – tongue	150 kg/m ³
Coating	PVC foil varnish coated (others on request)
Certification	EC,USCG