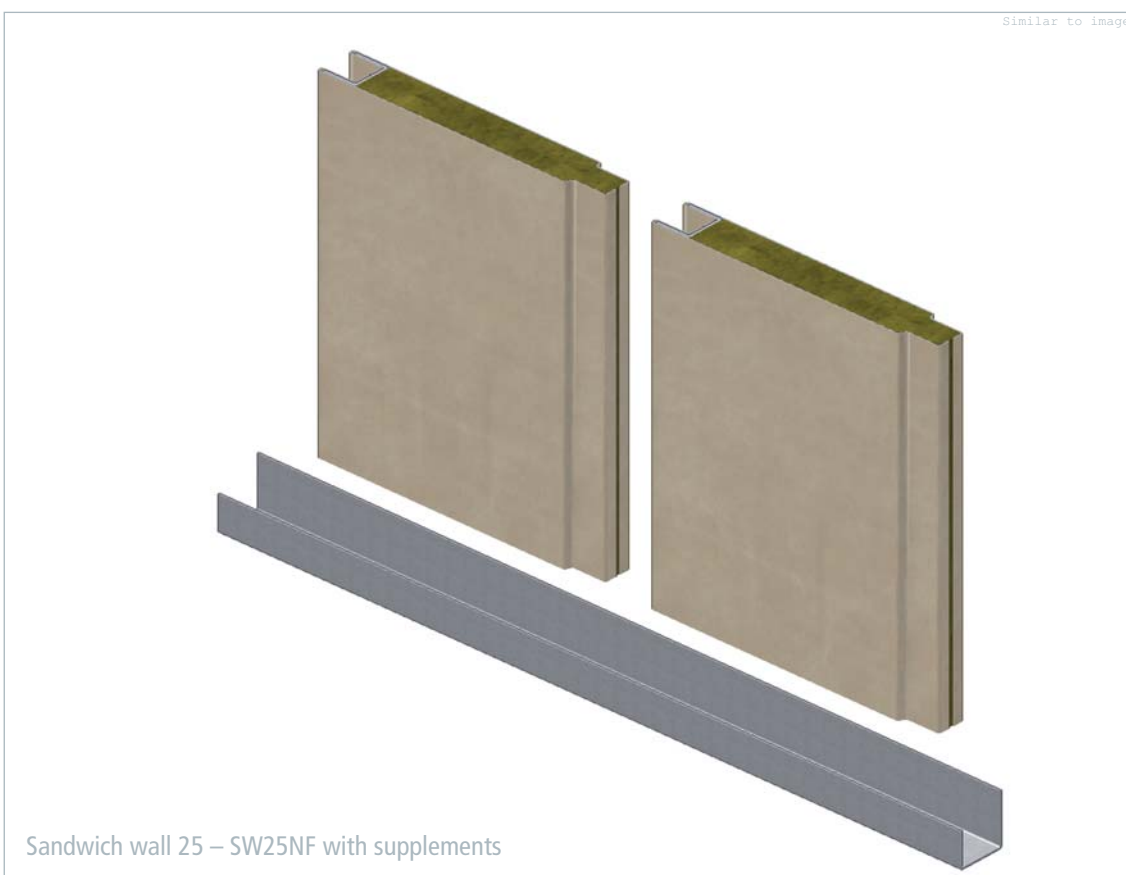
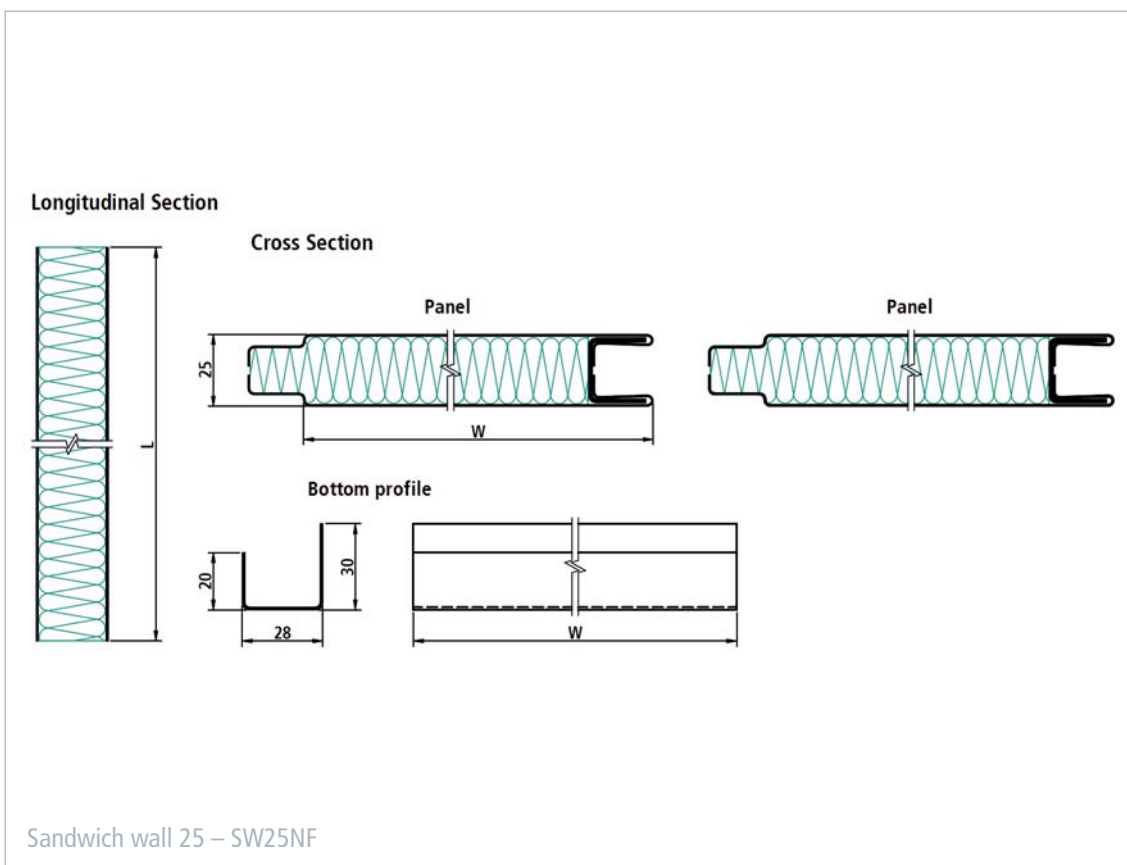


## Sandwich wall 25 – SW25NF



■ The SW25NF wall panel system is a sandwich construction that combines a B-15 fire classification with a low weight. By using the tongue and groove principle with an integrated tongue on one panel side, the SW25NF wall panel reaches a mass of only 15.6 kg/m<sup>2</sup> without losing structural integrity. The connection to the floor is achieved by assembling prefabricated U-profiles that are fastened to the bottom construction. A large variety of surface finishes are available; all of them have a removable protective foil to prevent any damage from occurring during installation. The design of the SW25NF wall panel system and all components used have been tested and approved according to international standards.



Sandwich wall 25 – SW25NF (single walls)			
Technical data	Steel   Steel or Stainless steel   Stainless steel	Steel   Aluminum or Stainless steel   Aluminum	Aluminum   Aluminum
Fire classification	B-15	B-0	C (higher rating in progress)
Sound reduction according to DIN EN ISO 140-3	30 dB	---	---
Element width	250 – 650 mm	250 – 650 mm	250 – 650 mm
Element length	1000 – 2475 mm	1000 – 2475 mm	1000 – 2475 mm
Thickness	25 mm	25 mm	25 mm
Mass per area – panel	15.6 kg/m <sup>2</sup>	12.0 kg/m <sup>2</sup>	8.2 kg/m <sup>2</sup>
Mass per length – U-profile (steel)	0.6 kg/m	0.6 kg/m	0.6 kg/m
Density of insulation material (panel and tongue)	150 kg/m <sup>3</sup>	150 kg/m <sup>3</sup>	150 kg/m <sup>3</sup>
Coating	PVC foil varnish coated (others on request)	PVC foil varnish coated (others on request)	PVC foil varnish coated (others on request)
Certification	EC, USCG, RMRS	EC, USCG	n/a