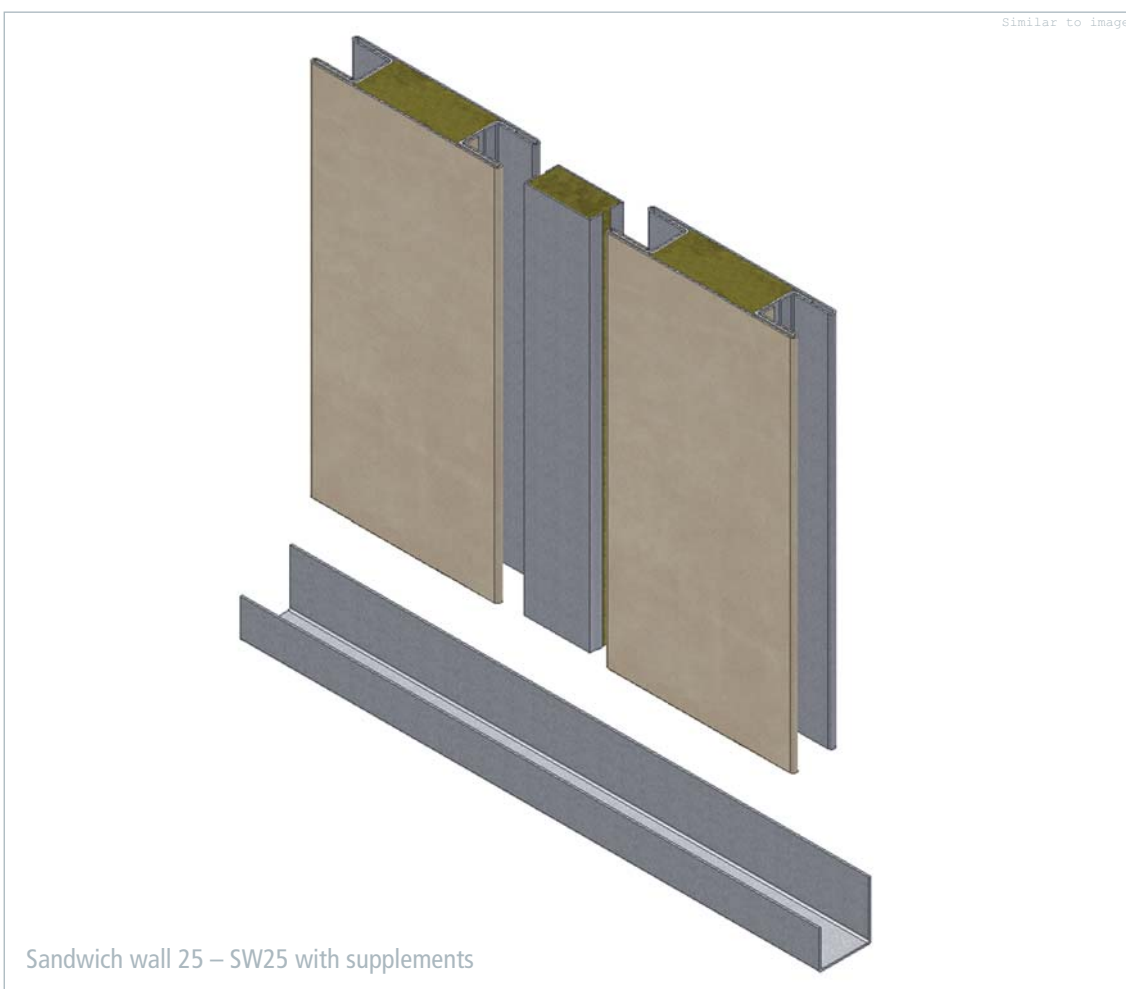
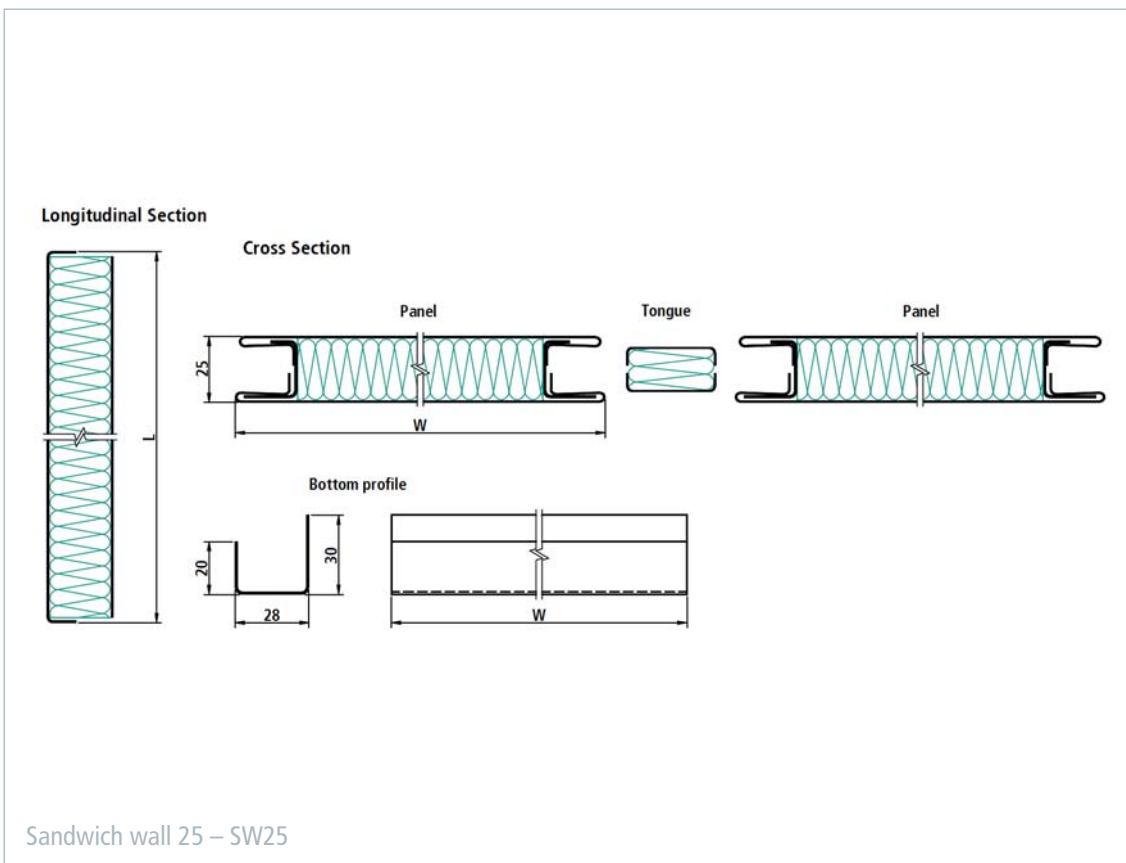


Sandwich wall 25 – SW25



■ The SW25 sandwich wall is an alternative solution to the standard wall in situations where space and weight play important roles. It also has the B-15 fire classification. The assembly is based on the tongue and groove principle. The wall is connected to the floor using prefabricated U-shaped sections, available in a number of different lengths from the manufacturer. The sections are laid out and fastened onto the floor.

A large variety of surface finishes are available; all of them have a removable protective foil to prevent any damage from occurring during installation. The design of the SW25 wall panel system and all components used have been tested and approved according to international standards.



Sandwich wall 25 – SW25			
Technical data	Steel Steel or Stainless steel Stainless steel	Steel Aluminum or Stainless steel Aluminum	Aluminum Aluminum
Fire classification	B-15	B-0	C (higher rating in progress)
Sound reduction according to DIN EN ISO 140-3	29 dB	---	24 dB
Element width	250 – 650 mm	250 – 600 mm	250 – 650 mm
Element length	1000 – 2475 mm	1000 – 2475 mm	1000 – 2475 mm
Thickness	25 mm	25 mm	25 mm
Mass per area – panel	16.5 kg/m ²	13.3 kg/m ²	9.0 kg/m ²
Mass per length – U-profile (steel)	0.6 kg/m	0.6 kg/m	0.6 kg/m
Density of insulation material (panel and tongue)	150 kg/m ³	150 kg/m ³	150 kg/m ³
Coating	PVC foil varnish coated (others on request)	PVC foil varnish coated (others on request)	PVC foil varnish coated (others on request)
Certification	EC, USCG, ABS, RMSR	EC, USCG	n/a